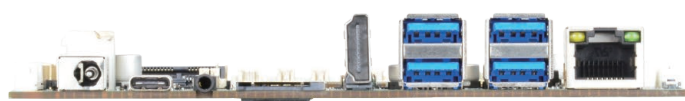
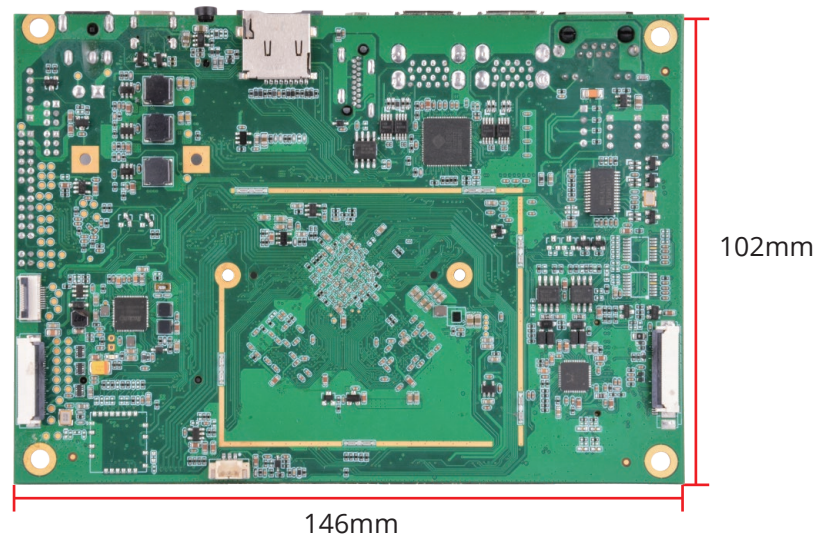
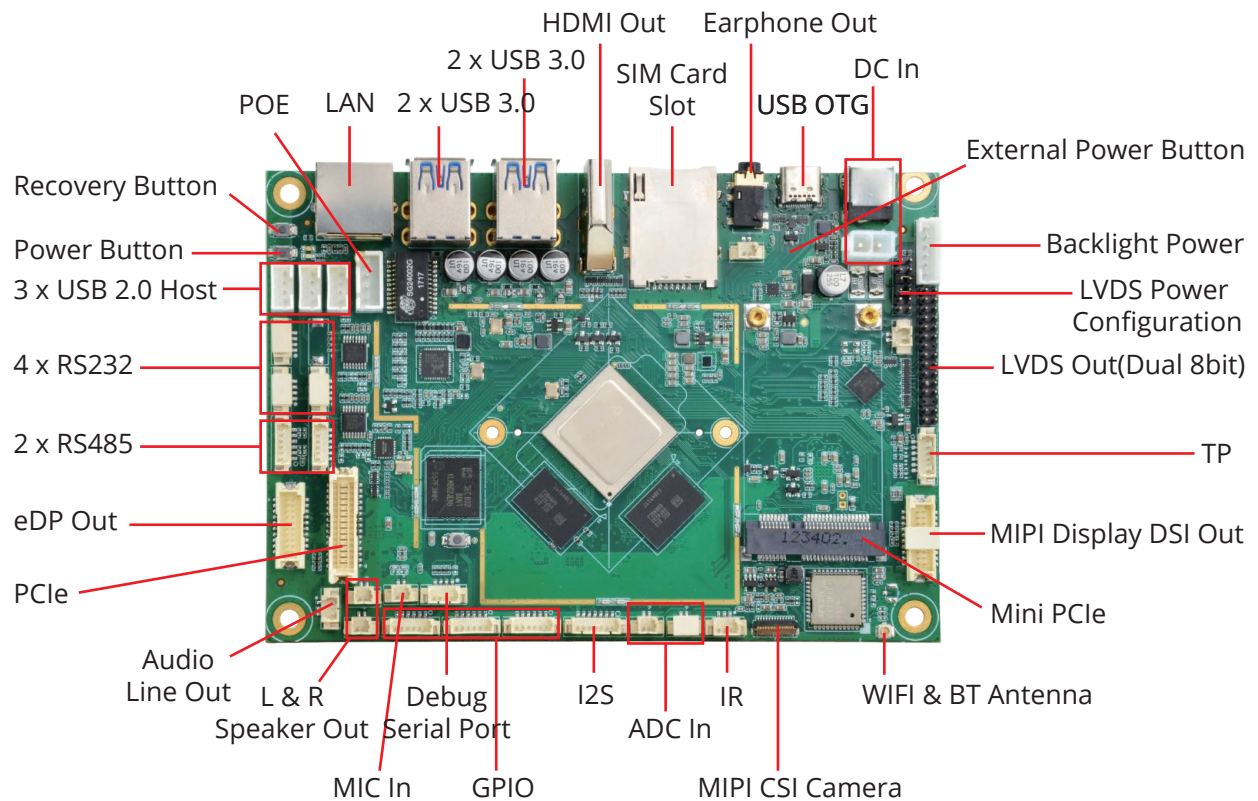




Embedded Motherboard Based on Rockchip RK3399 CPU



Specification:

System	
CPU	RK3399
	Dual-core Cortex-A72 up to 1.8GHz + Quad-core Cortex-A53 up to 1.4GHz
GPU	Mali-T860MP4 GPU, Support OpenGL ES1.1/2.0/3.0/3.1, OpenVG1.1, OpenCL, DX11
Memory	4GB Double-Channel 64bit LPDDR4
Flash	16GB eMMC 5.1, Support 8GB/32GB/64GB/128GB
OS	Android 8.1, Ubuntu 20.04
Communication	
RJ45	1 x 10/100/1000M LAN Port
WIFI&BT	WIFI2.4G/5G, BT4.0
I/O Interfaces	
USB OTG	1 x USB OTG, Type-C Connector
Earphone	1 x ϕ 3.5mm Earphone Out, With Mic in
TF	1 x TF Card Slot
SIM	1 x SIM Card Slot
HDMI	1 x HDMI Out
USB3.0	4 x USB3.0, USB A-Type Connector
Mini PCIe	1 x Mini PCIe Slot For 4G Module
CSI	1 x 4 Lane CSI MIPI In For Camera
DSI	1 x 4 Lane DSI MIPI Out For LCD
TP	1 x Touch Panel (I2C interface)
LVDS	1 x Double Channel 8bit LVDS Out
eDP	1 x 4 Lane eDP Out
Expansion	
Extended interface	1 x TTL UART for DEBUG
	4 x RS232 (Default) or TTL UART (Select)
	2 x RS485 (Default) or RS232 (Select) or TTL UART (Select)
	3 x USB 2.0
	2 x Speaker Out
	1 x Audio In
	12 x GPIO
	4 x I2S In
	2 x ADC In
	1 x IR In
	1 x PWM
	1 x RTC
	2 x KEY, Power Key and Recovery Key
Power	
Power In	DC 12V/2A
Mechanical	
Size	146 x 102 x 16mm

ABOUT POLYHEX

As a board level and system level designer and manufacturer, Polyhex, with 9-year experience, always delivers best-in-class embedded computing solutions based on both ARM and X86 architecture, including hardware customization and software debugging etc. Partnered with silicon vendors like Intel, NXP, ST, Rockchip, Allwinner and so on, we have earned trust from clients worldwide in over 30 countries. Polyhex is also certified with ISO9001 and ISO13485 for the self-owned manufacture facility.

