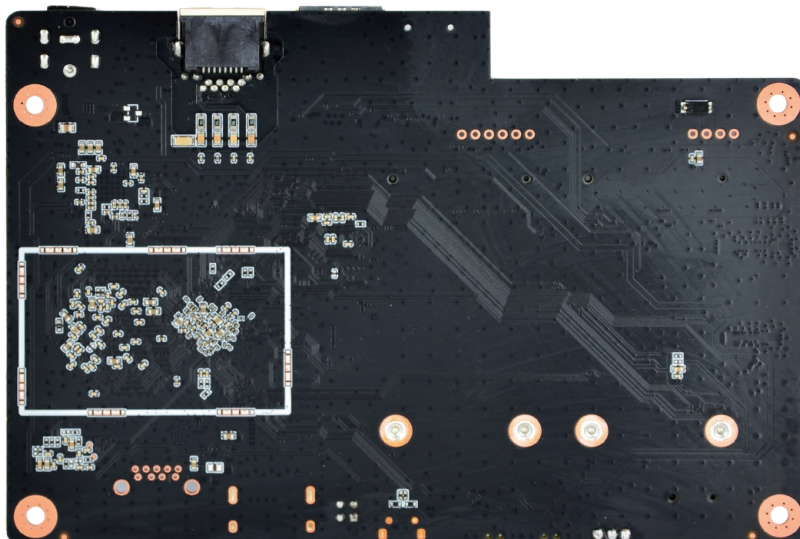
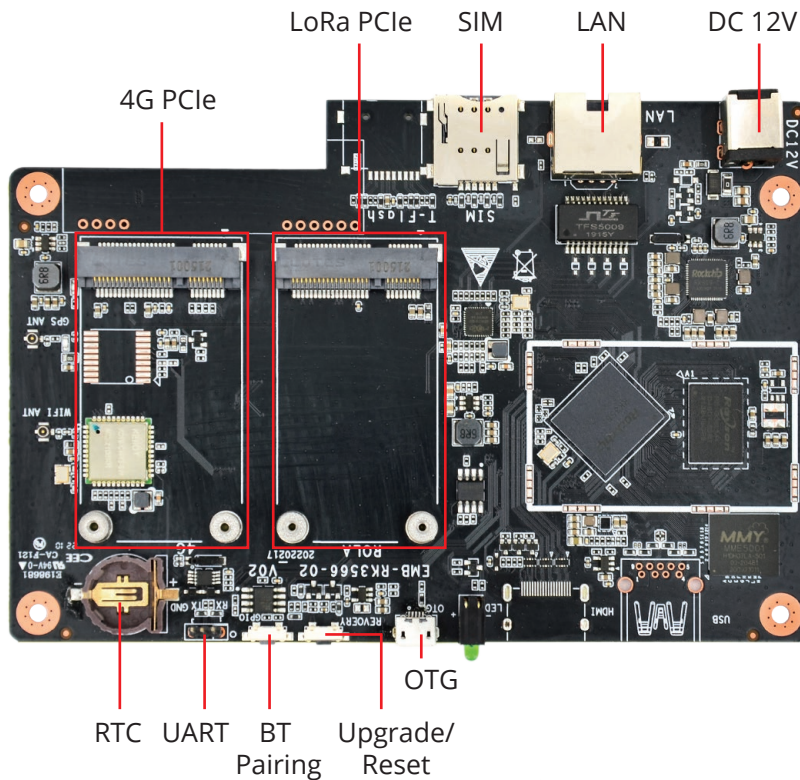




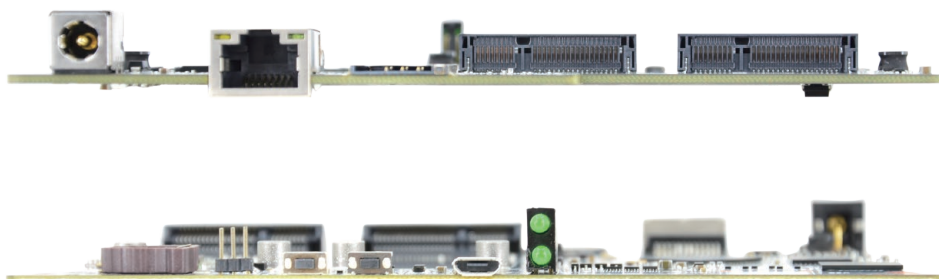
Embedded Motherboard Based on Rockchip RK3566 Quad-core Cortex-A55 CPU



Specification:

System	
CPU	Rockchip RK3566 Quad-core ARM Cortex-A55 1.8GHz
Memory	4GB LPDDR4
Flash	64GB eMMC
OS	Ubuntu 20.04
Communication	
RJ45	1 x 100/1000M LAN
WIFI & Bluetooth	WIFI 2.4G, BT4.2
LoRa	1 x LoRa Gateway, support 470MHz/868MHz/915MHz
4G	1 x 4G Module
GPS	1 x GPS Module
I/O Interfaces	
USB	1 x USB 3.0 (optional), 1 x Micro USB (OTG)
Serial Port	1 x TTL DEBUG
PCIe	1 x Mini PCIe (4G), 1 x Mini PCIe (LoRa)
HDMI	1 x HDMI OUT (optional)
Key	1 x Bluetooth Pairing Key, 1 x Upgrade/Reset Key
SIM Slot	1 x SIM Slot
TF Slot	1 x TF Slot (optional)
RTC	1 x RTC
Power Supply	
Power Input	1 x 12V DC IN
Mechanical	
Dimension	150mm x 102mm x 11.8mm

I/O Interfaces:



ABOUT POLYHEX

As a board level and system level designer and manufacturer, Polyhex, with 9-year experience, always delivers best-in-class embedded computing solutions based on both ARM and X86 architecture, including hardware customization and software debugging etc. Partnered with silicon vendors like Intel, NXP, ST, Rockchip, Allwinner and so on, we have earned trust from clients worldwide in over 30 countries. Polyhex is also certified with ISO9001 and ISO13485 for the self-owned manufacture facility.

