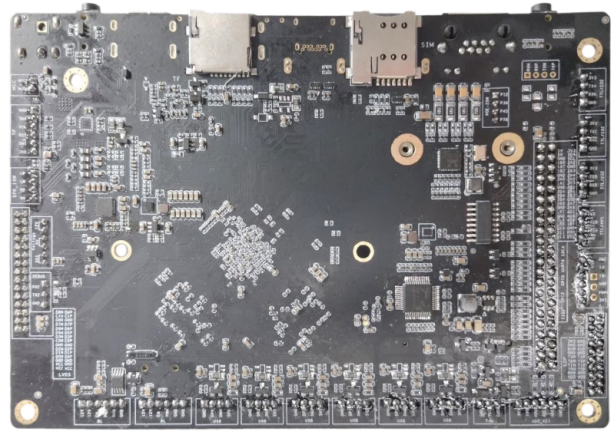
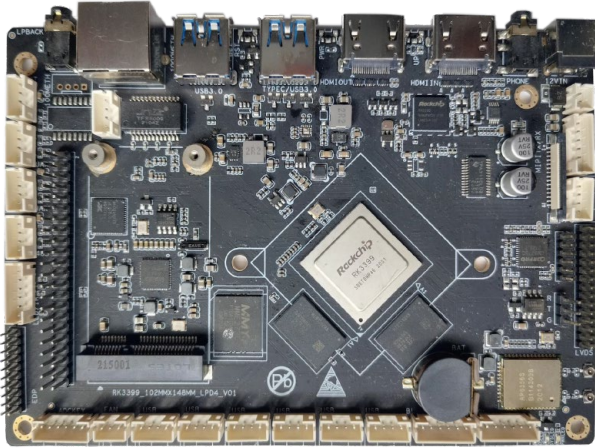




Embedded Motherboard Based on Rockchip RK3399



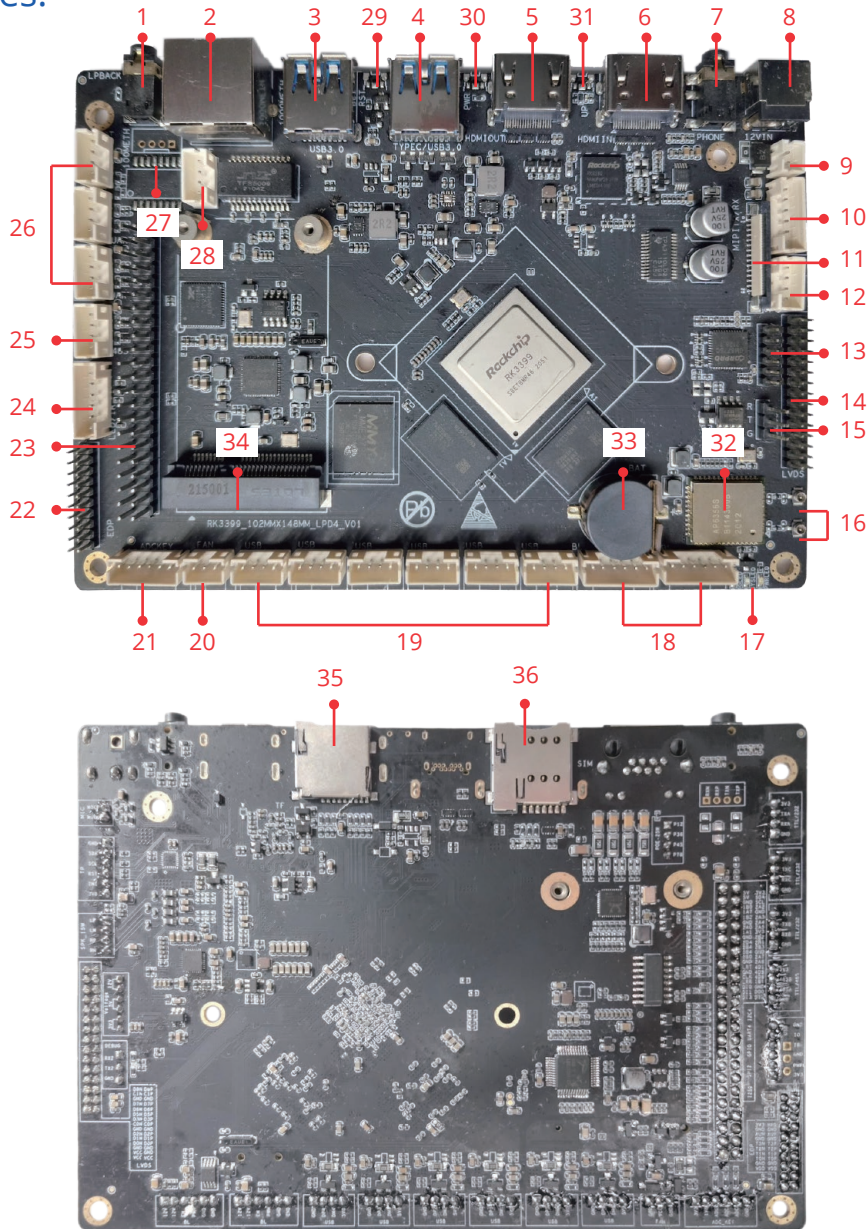
Compliance:



Specification:

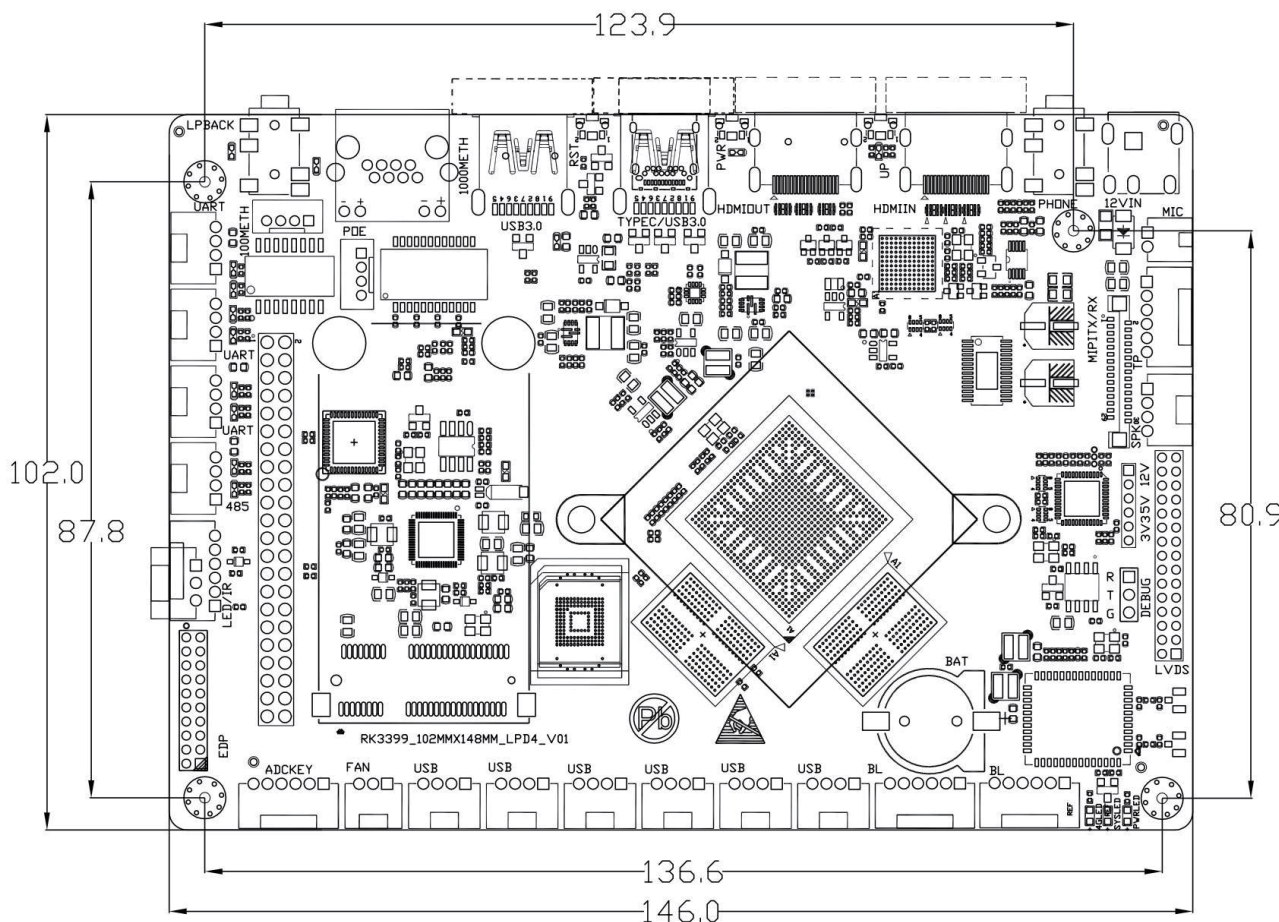
Voltage Input	DC 12V~24V
CPU	Rockchip RK3399 2 x Cortex-A72 & 4 x Cortex-A53
DDR	4G (512M*32Bit*4)
eMMC	16GB/32GB/64GB (optional)
PUM	Rockchip RK808-D
LAN	RTL8211F/1000M
WIFI & BT Module	AP6356S (optional)
Camera	Support 0.3-5M
LCD	Optional (MIPI/eDP/LVDS)
TP	Optional (I2C/USB)
Speaker	External speaker 15W
MIC	External
Type-C	Optional
USB	2 x USB 3.0, 6 x USB 2.0
4G Module	Optional, M.2 interface

I/O Interfaces:



- | | | |
|----------------------|------------------------------|--------------------------|
| 1 LoopBack | 2 1000Mbps LAN | 3 USB 3.0 |
| 4 USB 3.0/Type-C | 5 HDMI OUT | 6 HDMI IN |
| 7 Headphone | 8 DC IN 12V~24V | 9 MIC |
| 10 Touch Panel | 11 MIPI-TX/RX | 12 15W Speaker |
| 13 Power 3.3V/5V/12V | 14 LVDS | 15 Debug Serial Port |
| 16 WIFI/BT Antenna | 17 3 x LED Indicators | 18 2 x Backlight |
| 19 6 x USB 2.0 | 20 Fan | 21 ADC Key |
| 22 eDP | 23 I2S0/SPI2/GPIO/UART4/I2C4 | 24 Infrared Reception |
| 25 UART-RS485 | 26 3 x UART-RS323 | 27 100Mbps LAN |
| 28 PoE | 29 Reset Button | 30 Power Button |
| 31 Upgrade Button | 32 WIFI & BT Module | 33 Button Battery Holder |
| 34 M.2 Slot | 35 TF Slot | 36 SIM Slot |

Dimension:



Note:

1. PCBA dimensions: 146.0mm x 102.0mm x 1.6mm
2. The distance between the center of the mounting holes is 136.6mm(L), 123.9mm(L), 87.8mm(W), 80.9mm(W)
3. Mounting hole diameter: 3.5mm

ABOUT POLYHEX

As a board level and system level designer and manufacturer, Polyhex, with 12-year experience, always delivers best-in-class embedded computing solutions based on both ARM and X86 architecture, including hardware customization and software debugging etc. Partnered with silicon vendors like Intel, NXP, ST, Rockchip, Allwinner and so on, we have earned trust from clients worldwide in over 30 countries. Polyhex is also certified with ISO9001 and ISO13485 for the self-owned manufacture facility.

